

**STRAWBERRY INSECT CONTROL**

<b>Insect</b>	<b>Material and Formulation</b>	<b>Amount to Use/Acre</b>	<b>Remarks/Precautions</b>	<b>Days to Harvest</b>
<b>PREBLOOM</b>				
Strawberry Clipper	Brigade WSB	6.4-32 oz	Begin checking for clipped buds when the first flower appears. If clipped buds are found, apply insecticide and repeat spray at 10-day intervals as long as bud clipping continues. Lorsban applications are prebloom only.	0
	Danitol 2.4EC	10 2/3 oz		2
	Lorsban 4E	1 qt		21
	Sevin 4F	1-2 qt		7
Tarnished Plant Bug Spittlebug	Admire Pro	1.3 fl oz	Admire Pro as a foliar spray of spittlebug.	7
	Assail 30 SG	4-6.9 oz	DO NOT apply Assail more than twice per season.	1
	Brigade WSB	6.4-32 oz	Use higher rates of Danitol or Brigade for tarnished plant bug and spittlebug control.	0
	Danitol 2.4EC	10.67 oz	Rimon is labeled against tarnished plant bug but not spittle bug.	2
	Rimon 0.83EC	9-12 fl oz	If spittlebugs are a problem, spray when buds first become visible and make a second application just before the first blossom opens.	1
	Sevin 4F	1-2 qt		7
Spider Mites	Acramite 50 WS	0.75-1.0 lb	Label allows up to two applications of Acramite or Kanemite per season.	1
	Agri-Mek 0.15EC	16 fl oz	Apply Danitol at higher rates to control spider mites.	3
	Danitol 2.4EC	10 2/3 oz	Minimize road dust to prevent spider mite buildup.	2
	Kanemite 15 SC	21-31 fl oz		1
	Oberon	12-16 fl oz		3
	Portal	2 pt		1
	Savey	4-6 oz		3
	Vendex	2 lb		1
	Zeal 72 WSP	2-3 oz		1
	JMS Stylet Oil (OMRI*)	1-2 gal	JMS Stylet-oil is approved for organic production.	0
	Predator Mites	Ask state fruit entomologist	Release predatory mites for biological control of spider mites. Predator mites can be released when prey mite levels are between 1-5 mites per leaf. In general, release 2-3 predatory mites per plant when mite populations are low.	
Cyclamen Mite	Endosulfan 3EC	2.7 or 1.3 qt	Apply 2.7 qt of Endosulfan 1 to 2 days before bloom and 1.3 qt Endosulfan 3EC 10 to 14 days later. Endosulfan is not for use on annual strawberries on plasticulture. <b>After July 31, 2016, it will be unlawful to use Endosulfan on strawberry.</b> Portal is restricted to 2 applications of no more than 4 pints per crop cycle.	7
	Portal	2 pt		1
<b>EARLY BLOOM THROUGH BLOOM</b>			<b>SAVE THE BEES!! DO NOT APPLY INSECTICIDES DURING BLOOM.</b>	
<b>POST-BLOOM TO HARVEST</b>				
Aphids	Actara	1.5-3.0 oz	DO NOT exceed 14 fl oz per acre per season.	3
	Admire Pro	10.5-14 fl oz		14

\*OMRI = Organic Materials Review Institute lists compounds approved for organic production.

**PECAN INSECT CONTROL – COMMERCIAL**

<b>Insect</b>	<b>Material and Formulation</b>	<b>Amount to Use/Acre</b>	<b>Remarks/Precautions</b>	<b>Days to Harvest</b>
<b>Stink Bugs Leaffooted Bugs</b>	Imidan 70 WP	2-3 1/8 lb	Stink bugs are mobile pests that build populations on many broadleaf plants. Problems are often associated with orchards next to soybean. Some states recommend treatment when populations exceed one insect per 40 terminals.	14
	Mustang Max (R)	3.2-4.0 oz		7
	Warrior (R)	2.56-5.12 oz		14
<b>Hickory Shuckworm</b>	Asana XL (R)	4.8-14 oz	Treatments are warranted in orchards with a history of shuckworm infestation. Multiple applications may be required. Pecans are most susceptible to hickory shuckworm after the gel stage. Sampling is very difficult, although adult moths can be monitored using commercially available pheromone traps. Once traps begin catching shuckworm moths, growers can begin weekly inspections of nuts for egg cemented to the shuck in a creamy white substance.	21
	Belt	3-4 oz		14
	Dimilin 2F	8-16 oz		28
	Intrepid 2 F	4-8 oz		14
	Lorsban 4 E (R)	2-4 pt		28
	Mustang Max (R)	3.2-4.0 oz		7
	SpinTor	4-10 oz		14
	Warrior (R)	2.56-5.12 oz		14
Entrust (OMRI)	1.25-2.5 oz	1		
<b>Mites</b>	Acramite	12-16 oz	Mites are usually more of a problem in hot, dry periods or outbreaks occur after application of a pyrethroid or Sevin insecticides that kill the natural mite predators. Treat when leaf discoloration is noted and an average of 8 or more mites are found per compound leaf. Portal may only be applied once per season (do not apply by air).	14
	Dicofol 4E	2 qt		3
	Evidor 2SC	14-18 oz		7
	Portal	2 pt		14
	Zeal	2-3 oz		28
<b>Fall Webworm Walnut Caterpillar</b>	Belt	3-4 oz	DO NOT apply Belt by air. DO NOT apply Belt more than 3 times per season.	14
	Intrepid 2 F	4-8 oz		14
	Sevin	2 1/2-6 1/4 lb		14
	SpinTor	4-10 oz		14
	Dipel (OMRI)	1.5-2.0 lb		0
	Entrust (OMRI)	1.25-3 oz		1
<b>RED IMPORTED FIRE ANTS (ALL FIRE ANT BAITS) – Apply when ants are active and soil temperature is above 60 degrees F. DO NOT treat if rain is anticipated within 6 hours.</b>				
<b>Non-Bearing Trees</b>	Fenoxycarb (Award)	1-3 Tbsp/mound 1.0-1.5 lb/acre	Mound-to-mound treatment rate. This is an insect growth regulator (IGR). Broadcast rate.	
	Hydramethylnon (Amdro Pro)	2-5 Tbsp/mound 1.0-1.5 lb/acre		Mound-to-mound treatment rate. This is an IGR. Broadcast rate.
	S-Methoprene (Extinguish)	3-5 Tbsp/mound 1.0-1.5 lb/acre		Mound-to-mound treatment rate. This is an IGR. Broadcast rate.
	Pyriproxyfen (Esteem)	2-4 Tbsp/mound 1.5-2.0 lb/acre		Mound-to-mound treatment rate. This is an IGR. Broadcast rate.
	Pyridine (Distance)	1-4 Tbsp/mound 1.0-1.5 lb/acre		Mound-to-mound treatment rate. This is an IGR. Broadcast rate.
<b>Bearing Trees</b>	Pyriproxyfen (Esteem)	2-4 Tbsp/mound 1.5-2.0 lb/acre	Mound-to-mound treatment rate. This is an IGR. Broadcast rate.	

MP144  
2014

# Insecticide Recommendations for Arkansas

Japanese Beetle  
(*Popillia japonica*)



Lice  
(*Pediculus humanus*)



Grasshopper  
(*Melanoplus differentialis*)



Cockroach  
(*Periplaneta americana*)



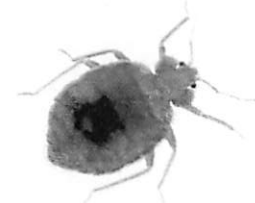
Potato Beetle  
(*Lema trilinea*)



Mosquito  
(*Anopheles quadrimaculatus*)



Bed Bug  
(*Cimex lectularius*)



Brown Recluse  
(*Loxosceles reclusa*)



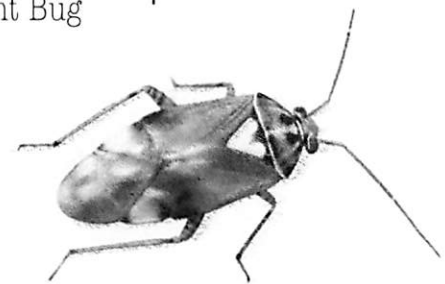
Brown Marmorated  
Stink Bug  
(*Halyomorpha halys*)



House Fly  
(*Musca domestica*)



Tarnished Plant Bug  
(*Lygus lineolaris*)



Corn Earworm  
(*Helicoverpa zea*)



**UofA** DIVISION OF AGRICULTURE  
RESEARCH & EXTENSION  
University of Arkansas System  
[www.udex.edu](http://www.udex.edu)